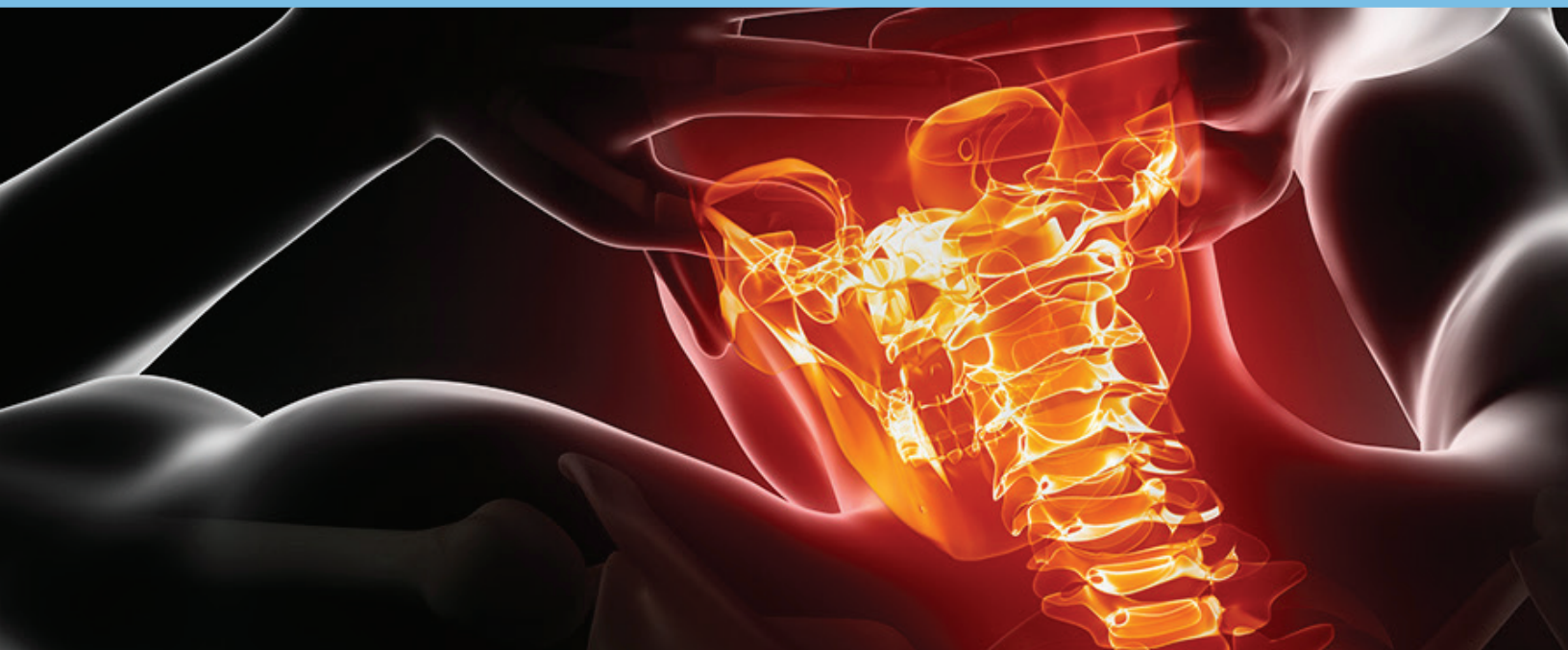




American Society of Regional Anesthesia and Pain Medicine

*Advancing the science and practice of regional anesthesiology and pain medicine
to improve patient outcomes through research, education, and advocacy*

ASRA



Pain Medicine and MSK Ultrasound Cadaver Course

Saturday, April 27—Sunday, April 28, 2019

Northwestern Simulation, Chicago, IL

COURSE GUIDE

Download educational materials at www.asra.com/ccp with password ASRACCP19.

Course Overview

Saturday, April 27 — 7 am–6:15 pm
Sunday, April 28 — 7:30 am–12:45 pm

ASRA's Pain Medicine and MSK Ultrasound Cadaver Course provides intensive, highly interactive learning and practical information that you can immediately put to use in your practice. Each topic consists of an introductory lecture followed by hands-on practice using live models and cadavers.

Topics include

- MSK sonoanatomy (hip, knee, shoulder, hand, elbow, and ankle) and scanning
- Sonoanatomy and scanning of peripheral and axial structures
- Ultrasound-guided platelet-rich plasma injections
- Ultrasound-guided hip and knee radiofrequency ablation techniques

Additional highlights

- Interventional and diagnostic ultrasound techniques
- Cadavers and live models for hands-on instruction
- Small group learning with no more than 5 participants per group
- Renowned faculty sharing their expertise with a low faculty-to-learner ratio
- Comprehensive course curriculum to support learning prior to, during, and after the course

Educational objectives

After participating in this educational activity, participants should be able to:

- Practice the basic principles of ultrasound imaging, equipment, and injectate selection for ultrasound-guided pain procedures.
- Explain the advantages and shortcomings of ultrasound-guided pain procedures.
- Identify the relevant sonoanatomy and interventional techniques for selected peripheral, spine, and musculoskeletal structures.
- Identify how ultrasound-guided joint injections and other MSK applications can improve the accuracy of the procedure.
- Obtain CME credits toward the ASRA Pain & MSK Interventional Ultrasound Certificate.

Target audience

The course is designed for the physician learner; specifically for Pain Practitioners, Anesthesiologists, Physical Medicine and Rehabilitation Physicians, Neurologists, and Sports Medicine Physicians currently using or wishing to use ultrasound technology for interventional and diagnostic pain procedures.

Top 5 Course Essentials

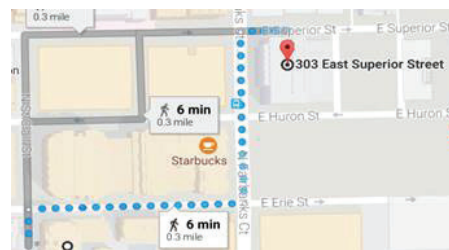
1 Locations

Educational Sessions

Northwestern Simulation
240 East Huron Street
Chicago, IL 60611
Tel: 312.503.4034

Recommended Hotel

Hyatt Centric Chicago
Magnificent Mile
633 North Saint Clair Street
Chicago, IL 60611
Tel: 312.787.1234



2 Northwestern Simulation Security Access

Everyone entering the Northwestern Simulation building must be preregistered; on-site registration is not possible. Attendees must show photo ID on arrival and have a picture taken onsite to receive an access badge. The Northwestern Simulation building will be accessible beginning at 7 am each morning.

3 Educational Materials and Presentations

Educational support materials are available to learners on the [ASRA website](#) and accessible with the password **ASRACCP19**. Materials are available to meeting participants prior to, during, and after the meeting (up to one year) for educational purposes only. Access to particular content is provided based on meeting registration and is password protected. Distribution is limited, and none of the materials should be further distributed or reproduced.

4 Evaluations and CME Certificates

Your opinion matters! Evaluate sessions and faculty and obtain your CME certificate by accessing the online system before **May 14** at www.surveymonkey.com/r/ASRACCP19. See page 12 for more information on CME credits and certificates.

5 Attendance Policies

- Registration fees are refundable, minus a \$100 processing fee, if cancellation is received in writing no later than three (3) weeks prior to the event commencement. After this date, under no circumstances will refunds or credits be granted.
- Attendee substitutions are allowed if notification is made in writing no later than three (3) weeks prior to the event commencement. A \$100 processing fee will be charged. After this date, under no circumstances will substitutions be granted.
- No refunds or credits will be given to “no shows.”
- All event activities (including meal functions) are exclusively reserved for registered attendees. Nonregistered guests (e.g., children, family members, colleagues) are not allowed in meeting areas. Badges provided at registration are required for entrance into all functions and will be strictly enforced.
- ASRA reserves exclusive rights to photograph and/or record (audio and video) all event proceedings and participants for use in marketing materials, presentations, and course content reproductions (online or other). Photography and/or recording by individuals is not permitted in the scientific, educational, and business meetings during any ASRA event, unless specifically preauthorized by ASRA. Individuals granted such privileges shall be properly registered at the event and issued the proper proof of privileges (press badge or other).
- ASRA reserves the right to modify the event’s schedule or program as necessary. ASRA reserves the right to cancel this event, in which case a full refund of the registration fee will be provided. ASRA is unable to refund any attendee expenses (flight, hotel, etc.) in the case of ASRA cancellation.
- ASRA and meeting organizers accept no liability for personal accidents or loss of or damage to private property of participants, either during or indirectly arising from this workshop. Participants are advised to take out their own personal health and travel insurance for their trip.
- ASRA fully complies with the legal requirements of the Americans with Disabilities Act and the rules and regulations thereof. If any participant in this educational activity has a special need, please contact us at the American Society of Regional Anesthesia and Pain Medicine, 3 Penn Center West, Pittsburgh, PA 15276, 855.795.ASRA (toll free in U.S.), 412.471.2718, asrameetings@asra.com.

ASRA Leadership

President: Eugene Viscusi, MD

President-Elect: Samer Narouze, MD, PhD

Treasurer: David Provenzano, MD

Immediate Past President:

Asokumar Buvanendran, MD

Executive Director: Angie Stengel, MS, CAE

Directors:

Steven P. Cohen, MD

Nabil Elkassabany, MD, MSCE

Edward R. Mariano, MD, MAS

Stavros Memtsoudis, MD

Carlos Pino, MD

Brian Sites, MD

Gina Votta-Velis, MD, PhD

Committee on Continuing Medical Education

Vincent W.S. Chan, MD, FRCPC, Chair

Carlos Pino, MD, Vice Chair

Ki Jinn Chin, MBBS, FANZCA, FRCPC

Stuart Grant, MD

Andrea Nicol, MD, MS

Kevin Vorenkamp, MD

Asokumar Buvanendran, MD (ex-officio)

Scientific/Education Planning Committee

Philip Peng, MBBS; Toronto Western Hospital,
University Health Network, Toronto, Canada (Chair)

Maged Mina, MD; University of Texas Health Science
Center, San Antonio, TX

Dmitri Souza, MD, PhD; Ohio University, Western
Reserve Hospital, Cuyahoga Falls, OH

Faculty

Anuj Bhatia, MD, FIPP, FRCPC, CIPS; University of Toronto
and Toronto Western Hospital, Toronto, Canada
Roderick Finlayson, MD; McGill University, Montreal,
Canada

Antoun Nader, MD; Northwestern University Feinberg
School of Medicine, Chicago, IL

Philip Peng, MBBS; Toronto Western Hospital, University
Health Network, Toronto, Canada

David Provenzano, MD; Pain Diagnostics and
Interventional Care, Sewickley, PA

Jonathan Samet, MD; Anne & Robert H. Lurie Children's
Hospital of Chicago, Northwestern Feinberg School of
Medicine, Chicago, IL

Neilesh Soneji, MD; University of Toronto, Canada

Dmitri Souza, MD, PhD; Ohio University, Western Reserve
Hospital, Cuyahoga Falls, OH

Associate Faculty

Rany Abdallah, MD, PhD; Temple University Health
System, Philadelphia, PA

Geoff Bellingham, MD, FRCPC; Western University,
London, Canada

Yashar Eshraghi, MD, Ochsner Clinic, Laguna Niguel, CA
Vasudha Goel, MD; NURA Pain Clinics St. Paul, MN

Jules Huang-Lionnet, MD, MBA; Greenwich Institute of
Spine and Pain Medicine, Greenwich, CT

Christine Hunt, DO; Mayo Clinic, Rochester, MN

Matthew Jaycox, MD; Rush University Medical Center,
Chicago, IL

Jennifer McDonald, MD; Ottawa Hospital Rehabilitation
Center, Ottawa, Canada

Nimish Mittal, MD, University of Toronto, Canada

Gunar Subieta Benito, MD; John H. Stroger Hospital of
Cook County, Chicago, IL

Paul Tumber, MD, FRCPC; University of Toronto, Canada

Course Faculty



Rany Abdallah, MD, PhD, is an assistant professor in the department of anesthesiology, divisions of acute and chronic pain, at the Lewis Katz School of Medicine at Temple University in Philadelphia, PA. He is board certified in anesthesiology and

pain medicine by the American Board of Anesthesiology. He runs an active practice that treats patients varied types of chronic pain syndromes including cancer pain, neuropathic pain, complex regional pain syndrome, atypical facial pain and headaches, among others. He is an active member of multiple professional societies, namely the American Society of Regional Anesthesia, North American Neuromodulation Society International Neuromodulation Society. Dr. Abdallah serves on the Substance Abuse Task force at the medical school and is actively involved in the education of medical students and residents. He is involved in multiple research projects, namely in the characterization of visceral abdominal pain and the pathophysiology of complex regional pain syndrome.



Geoff Bellingham, MD, FRCPC, is a Royal College-accredited pain medicine subspecialist within the department of anesthesia and perioperative medicine at the Schulich School of Medicine and Dentistry in London, ON,

Canada. He presently manages patients with chronic non-cancer pain syndromes at the St. Joseph's Health Centre Pain Clinic in Toronto using a combination of pharmacologic and interventional techniques. As an associate professor, Dr. Bellingham is actively involved in education, research, and administration within the pain clinic. He is the acting program director of the Pain Medicine Residency as well as medical director of the chronic pain clinic at St. Joseph's Health Care.



Anuj Bhatia, MD, FIPP, FRCPC, CIPS, is an assistant professor at the University of Toronto and clinical director, chronic pain at University Health Network and Women's College Hospital in Toronto, ON, Canada. He is the chair of the Neuropathic

Pain Special Interest Group of the Canadian Pain Society and member of the Royal College of Physicians and Surgeons' Pain Medicine Specialty committee. His clinical and research interests include use of epidemiological tools for assessing outcomes of treatments for pain, assessment and treatment of neuropathic pain, fluoroscopy- and ultrasound-guided procedures for chronic and cancer pain, and neuromodulation. He has published over 30 papers and six book chapters, and he has co-authored one book on ultrasound-guided interventional pain procedures.



Yashar Eshraghi, MD, was trained as an anesthesiology resident in the department of anesthesiology at Case Western Reserve University/MetroHealth Medical Center and graduated in 2015. Thereafter, he pursued the chronic fel-

lowship program in pain medicine at Cleveland Clinic Foundation before joining the department of anesthesiology and perioperative care at the University of California, Irvine, as a clinical assistant professor from September of 2016 until June 2018. He is currently a faculty member and director of research at Ocshner Clinic Pain Management Division.



Roderick Finlayson, MD, is a professor of anesthesia at McGill University in Montreal, QC, Canada. He practices at the McGill University Health Centre, where he is the director of interventional pain management and medical

director of the chronic pain network. He has a particular interest in the use of ultrasound guidance for spinal procedures and has been actively engaged in this research field.



Vasudha Goel, MD, is a pain management physician practicing at NURA Pain clinics in the twin cities. She found her interest in pain management while completing medical school in India. She went on to complete her anesthesiology residency at SUNY Downstate Medical Center and her pain medicine fellowship at Loma Linda University Medical Center. She has a special interest in helping the cancer survivors suffering from chronic pain. After clinical duties, teaching, and clinical research she enjoys to paint and spends time with her two young children.

to complete her anesthesiology residency at SUNY Downstate Medical Center and her pain medicine fellowship at Loma Linda University Medical Center. She has a special interest in helping the cancer survivors suffering from chronic pain. After clinical duties, teaching, and clinical research she enjoys to paint and spends time with her two young children.



Jules Huang-Lionnet, MD, MBA, is a Harvard and Hopkins-trained, board-certified anesthesiologist specializing in interventional pain management with certification in regenerative medicine. Dr. Huang-Lionnet completed her anesthesiology residency at Johns Hopkins Hospital within their clinical research track. During her time at Johns Hopkins, Dr. Huang-Lionnet served as a medical officer at the FDA in drug, device, and biologics regulatory review, with the aim to understand how to

bring healthcare advances to the patient's bedside. She completed her pain management fellowship at Harvard Medical School - Brigham and Women's Hospital.

bring healthcare advances to the patient's bedside. She completed her pain management fellowship at Harvard Medical School - Brigham and Women's Hospital.



Christy Hunt, DO, MS, is a graduating resident who will be continuing her training in pain medicine at the Mayo Clinic in Rochester, MN. She has written several publications related to regenerative medicine and discogenic back pain. Her

other clinical and research interests include the use of ultrasound in pain applications, neuromodulation, and education.



Matthew Jaycox, MD, is a graduate of Rush University residency in anesthesiology and a fellowship in pain medicine. He joined staff upon completion and has been in practice for eight years. He currently practices both anesthesia and

chronic pain management and is co-director of Rush's Acute Pain Management Service. He has a keen interest in the education of fellows and residents in the field of pain management, currently runs the pain management rotations for the residents and medical students, and is the associate program director for the pain medicine fellowship. His professional interests include techniques and protocols to improve the acute perioperative experience for patients with chronic pain and to ultimately reduce hospital lengths of stay.



Jennifer McDonald, MD, graduated from McGill University with a BSc (Hon). After obtaining her MD from the University of Toronto (U of T) in 2011, she completed her residency training in physical medicine and rehabilitation at the University of Ottawa

(2016). She is a Canadian Society of Clinical Neurophysiologists (EMG) diplomate. With a special interest in musculoskeletal and neuropathic pain, Dr. McDonald pursued additional fellowship training in interventional pain medicine at U of T, department of anesthesia and pain medicine (2017). She is an ASRA Pain and MSK Ultrasound Certificate (ASRA-PMUC) diplomate. She is also a member of the ASRA-PMUC Exam Editorial Board and teaches at several pain and MSK ultrasound workshops in Canada and the U.S.



Maged Mina, MD, was elected as best resident for regional anesthesia as chief resident at the University of Texas Health Sciences Center (UTHSC) in Houston in 2000. He has been chief of anesthesia at South Texas Spine Hospital since

2007. Dr. Mina has assisted with numerous ultrasound-guided courses for chronic pain. He is currently adjunct faculty with UTHSC San Antonio, writing four chapters on pediatric pain in a textbook for the department. He has extensive work experience with chronic pediatric pain in collaboration with pediatric orthopedic surgeons, particularly pediatric complex regional pain syndrome .



Nimish Mittal, MD, is a physiatrist at University of Toronto, Canada, with subspecialty fellowship training in chronic pain management. His expertise involves comprehensive multimodal pain management including ultrasound- and

fluoroscopy-guided interventions and management of complex connective tissue disorders. He is the newsletter liaison of ASRA's Regenerative Pain Medicine Special Interest Group and a committee member of the Pain Group of the International Consortium of the Ehlers Danlos Syndrome.



Antoun M. Nader, MD, is a professor in the department of anesthesiology and orthopedics at the Feinberg School of Medicine at Northwestern University in Chicago, IL. He is the section chief for regional anesthesia and acute pain management at

Northwestern Memorial Hospital and the medical director for acute pain medicine. He is also the fellowship co-director for the adult and pediatric regional anesthesia and acute pain management fellowship at McGaw Medical Center at Northwestern University.



Philip Peng, MBBS, is a professor in the department of anesthesia of University of Toronto, Canada. He is the director of the anesthesia chronic pain program of University Health Network, the largest teaching hospital of Canada. He has

played an important role in pain medicine education and established major teaching courses for pain in Canada. Royal College of Physicians and Surgeons of Canada (RCPSC) honored him with Founder designation in pain medicine for his role in establishing the pain medicine subspecialty in Canada.



David Provenzano, MD, is the president of Pain Diagnostics and Interventional Care in Pittsburgh, PA. He received his undergraduate degree from Colgate University where he graduated Magna Cum Laude and became a Phi Beta Kappa member. He received his medical degree from the University of Rochester School of Medicine and Dentistry. He completed a surgical internship at Thomas Jefferson University Hospital and a residency in anesthesiology at The Western Pennsylvania Hospital. He completed a pain management fellowship at the Dartmouth Hitchcock Medical Center. He is the treasurer of ASRA. In addition, he serves on the Educational Track Subcommittee on Pain Medicine for the American Society of Anesthesiologists. He has extensive interests and expertise in the conservative treatment of pain originating from the cervical and lumbar spine, neuromodulation, and the utilization of ultrasound for interventional pain management procedures.



Jonathan Samet, MD, is an assistant professor of radiology at Northwestern University Feinberg School of Medicine, based at Northwestern Memorial Hospital and Ann & Robert H. Lurie Children's Hospital of Chicago. He grew up in

Baltimore, MD, and trained in diagnostic radiology at Northwestern University followed by sub-specialization in musculoskeletal radiology at Johns Hopkins Hospital. He has a particular interest in pediatric musculoskeletal imaging.



Neilesh Soneji, MD, completed his medical training and anesthesia residency at the University of Toronto. He completed a fellowship in chronic pain management at the University Health Network and Wasser Pain Management Centre-Mt.

Sinai Hospital where he continues to practice as a staff anesthesiologist. He specializes in the management of acute and chronic pain with a particular interest in ultrasound-guided interventions for musculoskeletal pain.



Dmitri Souza, MD, PhD, is a clinical professor of anesthesiology at Ohio University and Western Reserve Hospital. He serves as faculty and a member of the board directors at National Physician Symposia where he teaches pain medicine. He is a member of the

ASRA Ultrasonography in Pain Medicine Special Interest Group (SIG) and one of the leaders of ASRA's Regenerative Medicine SIG.



Gunar Subieta Benito, MD, is an attending of anesthesiology and pain management at John H. Stroger Hospital and is a clinical assistant professor for Rush Medical College in Chicago, IL. He is board certified in anesthesiology,

pain management, internal medicine, and geriatrics. He also participates as adjunct faculty at the State University of New York at Buffalo (SUNY) regional anesthesia workshop for acute pain. He graduated from the University del Valle School of Medicine in Bolivia and did his graduate training at the University of Illinois and at Stroger Hospital.



Paul Tumber, MD, FRCPC, is the director of chronic pain education and a pain management consultant at the Toronto Western Hospital, University Health Network, and Mt. Sinai Hospital in Toronto, Canada. He is a former director of the

acute pain service and has a special interest in the use of methadone for pain management as well as ultrasound in the use of regional anesthesia and interventional pain medicine.

Disclosure and Resolution of Personal Conflicts of Interest

In accordance with the ACCME's Standards for Commercial Support and related policies, ASRA is committed to ensuring balance, independence, objectivity, and scientific rigor in its CME/CPD activities. Those in control of the educational content disclose all relevant relationships (financial or other) with any commercial interest that they or their spouse/partner have had within the past 12 months. If an individual refuses to disclose, they are disqualified from participating. Disclosure information is evaluated and conflicts of interest resolved. Disclosure is made to participants prior to the activity. Participants are asked to evaluate the objectivity and independence. Off-label or investigational use of a therapeutic product is also disclosed.

| Last Name | First Name | Role | COI | Honoraria / Expenses | Consulting / Advisory Board | Speakers Bureau | Funded Research (Institution) | Other | Off-Label/Usage |
|---|------------|--------------------------------|-----|----------------------------------|--|----------------------|--|--|-----------------|
| Abdallah | Rany | Associate Faculty | Yes | | | | Relevant, Vertiflex | | No |
| ASRA Admin Team (Borter, Simper, Stengel) | | Society, CME, Meeting Mdingmnt | No | | | | | | No |
| Bellingham | Geoff | Associate Faculty | No | | | | | | No |
| Bhatia | Anuj | Faculty | No | | | | | | No |
| Buvanendran | Asokumar | CME (ex-officio) | Yes | | Avanos (formerly Halyard Health) | | | | No |
| Chan | Vincent | CME | Yes | Philips | | | | | No |
| Chin | Ki-Jinn | CME | No | | | | | | No |
| Eshraghi | Yashar | Associate Faculty | No | | | | | | No |
| Finlayson | Roderick | Faculty | No | | | | | | No |
| Goel | Vasudha | Associate Faculty | No | | | | | | No |
| Grant | Stuart | CME | Yes | | Bbraun, Avanos (formerly Halyard Health) | | SPR Therapeutics, Avanos (formerly Halyard Health) | | No |
| Huang- Lionnet | Jules | Associate Faculty | No | | | | | | No |
| Hunt | Christine | Associate Faculty | No | | | | | | No |
| Jaycox | Matthew | Associate Faculty | Yes | Avanos (formerly Halyard Health) | | | | | No |
| McDonald | Jennifer | Associate Faculty | No | | | | | | No |
| Mina | Maged | Planning Committee | Yes | | | Pfizer, Astra Zeneca | | | No |
| Mittal | Nimish | Associate Faculty | No | | | | | | No |
| Nader | Antoun | Faculty | Yes | | AcelRx Pharmaceuticals | | SPR Therapeutics | | No |
| Nicol | Andrea | CME | No | | | | | | No |
| Peng | Philip | Planning Committee, Faculty | Yes | | | | | Equipment support Sonosite Fujifilm Canada | No |

Disclosure and Resolution of Personal Conflicts of Interest

In accordance with the ACCME's Standards for Commercial Support and related policies, ASRA is committed to ensuring balance, independence, objectivity, and scientific rigor in its CME/CPD activities. Those in control of the educational content disclose all relevant relationships (financial or other) with any commercial interest that they or their spouse/partner have had within the past 12 months. If an individual refuses to disclose, they are disqualified from participating. Disclosure information is evaluated and conflicts of interest resolved. Disclosure is made to participants prior to the activity. Participants are asked to evaluate the objectivity and independence. Off-label or investigational use of a therapeutic product is also disclosed.

| Last Name | First Name | Role | COI | Honoraria / Expenses | Consulting / Advisory Board | Speakers Bureau | Funded Research (Institution) | Other | Off-Label Usage |
|----------------|------------|-----------------------------|-----|--|-----------------------------|-----------------|-------------------------------|-------|---------------------------|
| Pino | Carlos | CME | Yes | | Mainstay Medical | | | | No |
| Provenzano | David | Faculty | Yes | Abbott, Biotronik, Bioness, Boston Scientific, Avanos (formerly Halyard Heath), Medtronic, Nevro, Sollis, Esteve | | | Abbott, Medtronic, Nevro | | No |
| Samet | Jonathan | Faculty | No | | | | | | No |
| Sites | Brian | CME (ex-officio) | Yes | | Access Anesthesiology | | | | No |
| Soneji | Neilesh | Faculty | No | | | | | | No |
| Souza | Dmitri | Planning Committee, Faculty | Yes | | | | | | Yes, Platelet-Rich Plasma |
| Subieta Benito | Gunar | Associate Faculty | No | | | | | | No |
| Tumber | Paul | Associate Faculty | No | | | | | | No |
| Vorenkamp | Kevin | CME | No | | | | | | No |

Program

| Saturday, April 27, 2019 | | |
|--------------------------|--|--|
| 7:00 am | Registration and Breakfast | |
| 7:45 am | Welcome, Introductions, Course Organization | Philip Peng, MD |
| 7:55 am | MSK Scanning and Intervention | Jonathan Samet, MD |
| 8:30 am | Shoulder Scan and Intervention | Jonathan Samet, MD |
| 9:00 am | Hip and Knee Joint Intervention, Including RF Ablation | Philip Peng, MD |
| 9:45 am | Break | |
| 10:00 am | Stations 1-6: Live Model 1. TAP, Ilioinguinal, Genitofemoral 2. Wrist and Elbow 3. Piriformis M / Pudendal N 4. Shoulder 5. Lumbar Facet / Medial Branch 6. Hip / Knee RFA Stations 7-12: Cadaver/PRP/Phantom 7. Greater Occipital and Suprascapular Nerve 8. Sacroiliac Joint Including RFA 9. Cervical Sympathetic Chain, Hip, and Knee Injection Part 1 10. Cervical Sympathetic Chain, Hip, and Knee Injection Part 2 11. Cervical Medial Branch 12. Platelet-Rich Plasma (PRP) and Phantom | Stations 1-6: Faculty 1. Antoun Nader / Rany Abdullah 2. Jonathan Samet/ Gunar Subieta Benito 3. Geoff Bellingham 4. Jennifer McDonald 5. David Provenzano / Christine Hunt 6. Philip Peng / Yashar Eshraghi Stations 7-12: Faculty 7. Anuj Bhatia 8. Neilesh Soneji/ Vasuda Goel 9. Nimish Mittal 10. Paul Tumber/Matthew Jaycox 11. Roderick Finlayson/Jules Huang-Lionnet 12. Dmitri Souza |
| 10:45 am | 2nd Rotation | |
| 11:30 am | 3rd Rotation | |
| 12:15 pm | Lunch Lecture: Billing and Ultrasound | David Provenzano, MD |
| 12:45 pm | Lunch Lecture: Platelet-Rich Plasma (PRP) | Dmitri Souza, MD |
| 1:30 pm | 4th Rotation | |
| 2:15 pm | 5th Rotation | |
| 3:00 pm | 6th Rotation | |
| 3:45 pm | Break (<i>rotation switch</i>) | |
| 4:00 pm | 7th Rotation | |
| 4:45 pm | 8th Rotation | |
| 5:30 pm | 9th Rotation | |
| 6:15 pm | Adjournment Day 1 | |
| Sunday, April 28, 2019 | | |
| 7:30 am | Breakfast | |
| 8:00 am | Scanning for Selected Axial Structures | Roderick Finlayson, MD |
| 8:50 am | Scanning for Selected Peripheral Structures | Philip Peng, MD |
| 9:40 am | Q & A and Discussion | |
| 10:00 am | Break | |
| 10:15 am | 10th Rotation | |
| 11:00 am | 11th Rotation | |
| 11:45 am | 12th Rotation | |
| 12:30 pm | Open Scan (<i>optional</i>) | |
| 12:45 pm | Final Adjournment | |

Continuing Medical Education/Continuing Professional Development

To receive your CME certificate:

1. Access the online system before **May 14** by visiting www.surveymonkey.com/r/ASRACCP19.
2. Complete the anonymous online evaluation.
3. Indicate the number of hours you attended (credit will be verified against registration).
4. Your certificate will be sent to the e-mail address provided within 3 weeks of completing the online process.
5. Thank you for your feedback!

Accreditation and Credit Designation Statements

| Day | Maximum Credits |
|----------------------------|-----------------|
| Saturday | 9.75 |
| Sunday | 4.50 |
| Total Credits:..... | 14.25 |



The American Society of Regional Anesthesia and Pain Medicine is accredited by the Accreditation Council for Continuing Medical Education (ACCME) to provide continuing medical education for physicians.

The American Society of Regional Anesthesia and Pain Medicine designates this live activity for a maximum of 14.25 *AMA PRA Category 1 Credits™*. Physicians should claim only the credit commensurate with the extent of their participation in the activity.

The American Board of Anesthesiology (ABA)

Credit reporting to the ABA: ASRA is an ABA-approved provider and as a service to ASRA members and participants, CME credits are reported to the ABA. Participants must include their correctly formatted ABA ID number (34567890) during the online evaluation and credit claim process available at the conclusion of the activity. Once the online evaluation and credit claim process is closed, certificates will be issued and credits reported to the ABA. After this time, participants may request their CME certificate by contacting asrameetings@asra.com, but ASRA will no longer report credits to the ABA, which will then be the individual participant's responsibility.

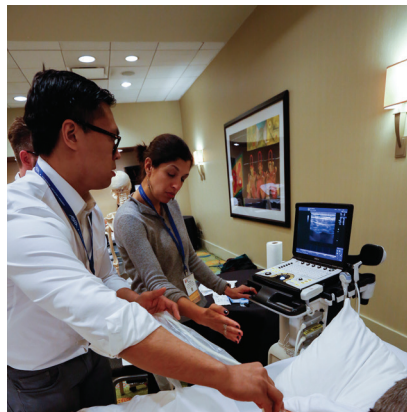


International Credits

The Royal College of Physicians and Surgeons of Canada has agreements based on the mutual recognition of credit points with the American Medical Association for live educational events. You may submit your CME certificate directly for credit recognition of this accredited group learning activity (Section 1) as defined by the Maintenance of Certification program of The Royal College of Physicians and Surgeons of Canada. For more information, visit www.royalcollege.ca

The European Accreditation Council for Continuing Medical Education (UEMS-EACCME) has agreements based on the mutual recognition of credit points with the American Medical Association for live educational events. Each medical specialist should claim only those hours of credit that he/she actually spent in the educational activity. The EACCME is an institution of the European Union of Medical Specialists (UEMS): www.uems.net

You've got the skills and knowledge . . .



Now, get the certification!

ASRA's Pain and MSK Interventional Ultrasound Certification recognizes currently accepted levels of knowledge and expertise in Pain and MSK Interventional Ultrasound to improve patient care.

The certificate is open to physicians only and requires an application including letters of recommendation and a minimum of 20 hours of *AMA PRA Category 1™* or equivalent in pain and MSK ultrasound-guided CME programming in the preceding two years. Approved candidates may then sit for the written and practical skills exam proctored by trained specialists.

Now accepting applications for the November 13th test administration in New Orleans, LA. Applications must be postmarked by September 13, 2019.



Learn more at www.asra.com/certificate

Commercial Support Disclosure

ASRA thanks the following for their generous support:

Educational Grants

Avanos
FUJIFILM SonoSite

Durable Equipment

Clarius Mobile Health
FUJIFILM SonoSite
GE Healthcare
Plymouth Medical

Disposable Supplies

Avanos
Plymouth Medical
Safersonic

Animal Parts/Tissue

Plymouth Medical

Guidelines Regarding Industry Representative Participation and In-Kind Support

Industry Support

This course is supported, in part, by in-kind contributions from industry (donations of durable equipment and/or disposable supplies). ASRA would like to thank all the companies for their support of this educational activity.

Disclosure

Attendees may view the full list of supporting companies in the printed program guide and activity website.

Industry Representative/Technician Participation

In addition to the in-kind support provided, ASRA has requested that technicians from multiple supporting companies be present to demonstrate the operational aspects and proper functioning of the devices only.

Strict Compliance with the ACCME's Accreditation Criteria and Standards for Commercial Support

1. ASRA is responsible for all decisions regarding the educational elements (planning, content, faculty selection, presentation, evaluation, etc.). Industry representatives in no way influence any portion of the CME activity, including how the in-kind support will be used or allocated to the educational sessions.
2. Industry employees shall be easily identifiable by their company and meeting badges.
3. The industry representative shall only contribute technical information about the use of the equipment.
4. The industry representative shall NOT expand his or her input into areas of clinical medicine, such as:
 - a. Indications for use
 - b. Comparisons between competing products
 - c. Comparisons between the device, invasive surgery, and/or medical treatment
5. ASRA's faculty and staff provide strict supervision to ensure proper professional behavior by industry representatives.
6. ASRA reserves the right to physically limit the technician's access to the educational setting, requesting the technician's participation only when questions arise or further assistance is needed.

Attendee Feedback

Attendees are encouraged to communicate any concerns of commercial influence or bias directly to faculty, staff members at the registration desk, and via the online evaluation.



American Society of Regional Anesthesia and Pain Medicine
*Advancing the science and practice of regional anesthesia and pain medicine
to improve patient outcomes through research, education, and advocacy*

ASRA



18th Annual Pain Medicine Meeting

November 14-16, 2019 | New Orleans, LA

#ASRA FALL19

Stronger Together

Registration will open June 2019 at www.asra.com/pain